

TOOLING & COMPOSITES

Product Description

MULTIPOXY EPOXY are manufactures of a range of gel coat, laminating systems and casting resins for epoxy tooling systems. These speciality epoxy tooling systems form an ideal lay-up tool for prepregs, master models, negative models and foundry patterns for foundries and ceramic industry.

MULTIPOXY EPOXY GEL COATS

MULTIPOXY EPOXY Gel Coats form a preferred first surface of a composite mould. They can be applied in reasonable thickness in single coats and stick to inclined surfaces of the mould, multiple coats can be applied to achieve thickness. The cured gelcoat offers a highly polishable and durable surface to epoxy based moulds.

MULTIPOXY EPOXY LAMINATING SYSTEM

MULTIPOXY EPOXY Laminating system are a preferred choice to construct high performance composite tooling prototype and/or production parts when used with reinforcing fabrics. They offer excellent wet out of reinforcing fabrics such as fibre glass or carbon fibres and when cured have excellent mechanical properties and chemical resistance.

MULTIPOXY EPOXY CASTING SYSTEM

MULTIPOXY EPOXY Casting System are a preferred choice for making durable moulds, models and tools having high mechanical strength. MULTIPOXY EPOXY Casting Systems can be used to cast thickness up to 100 mm and are the cured cast in machine able.

Application Precautions and Limitations

- Essential care must be taken to ensure proper mixing of MULTIPOXY EPOXY Gel Coats and Laminates

PRODUCT RANGE AND SERIES

❖ LAMINATES

MP MULTILAM - HV

System Properties	Color: Clear Pot life @25°C: 100-150 mins Mixing Ratio: 100:10 PBW Mixture consistency: Medium Viscous liquid Optics: Transparent
Recommended Applications	Industrial composites, Structural Composites, Glass fiber laminates
Packing	1.1 kg

MP MULTILAM- LV

System Properties	Color: Clear Pot life @25°C: 100-150 mins Mixing Ratio: 100:10 PBW Mixture consistency: low Viscosity liquid Optics: Transparent
Recommended Applications	Glass fiber laminates, Lamination tools, Composites
Packing	1.1 kg

❖ GEL COATS

MP MULTIGELCOAT - BLU

System Properties	Color: Blue Pot life @25°C: 20-30 mins Mixing Ratio: 100:14 PBW Mixture consistency: Thixotropic Blue paste Optics: Opaque
Recommended Applications	Working model for ceramic industry, Gelcoat, Negative & laminating molds, Foundry patterns
Packing	5.7 kg

MP MULTIGELCOAT - BLK

System Properties	Color: Black Pot life @25°C: 20 -30 mins Mixing Ratio: 100:16 PBW Mixture consistency: Thixotropic black paste Optics: Opaque
Recommended Applications	Working model for ceramic industry, Gelcoat, Negative & laminating molds, Foundry patterns
Packing	5.8 kg

MP MULTIGELCOAT - WHT

System Properties	Color: White Pot life @25°C: 20 - 30 mins Mixing Ratio: 100:14 PBW Mixture consistency: Thixotropic white paste Optics: Opaque
Recommended Applications	Working model for ceramic industry, Gelcoat, Negative & laminating molds, Foundry patterns
Packing	5.7 kg

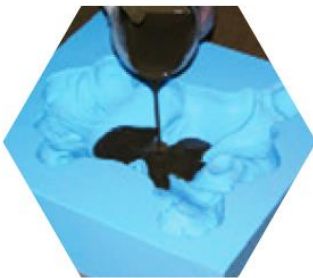
Health & Safety Precautions

- Use rubber hand gloves, dust masks and safety goggles while using MULTIPOXY EPOXY GEL COATS AND LAMINATES. In case of contact with skin, wash with water. Keep away from children.

Application Steps



1. SURFACE PREPRATION



5. CASTING SYSTEMS

- Mix the three components together thoroughly for at least 2 minutes so as to achieve uniform mixing
- Slowly pour the mix, allow the mix to settle & level properly

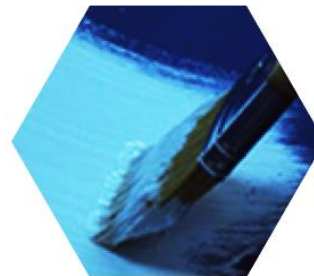


**2. MIX TWO
COMPONENTS**



4. LAMINATING SYSTEMS

- Lay the 100-650 gsm of glass fiber/carbon fibber on the surface.
- Apply 2 or 3 coats of the mixture again.
- Pour the laminating resin onto the fiber glass and spread



3. GEL CPOAT SYSTEMS

- Apply mould releasing agent on the surface of the mould and then apply 2 – 3 coats of the gel coat, allow it to cure.

MULTIPROOF INDUSTRIES PVT. LTD.

Plot No. 42/238, Maheshwari Complex,
Company Bagh, Satna 485001, M.P. India
Contact No. +91-9424803883
Email- info@multiproof.co.in
Website- www.multiproof.co.in



AN ISO 9001:2015 CERTIFIED COMPANY

Disclaimer: The product information & application details given by the company & its agents have been provided only as a general guideline for usage. No guarantee / warranty is given or implied with any recommendations made by us, our representatives or distributors, as the conditions of use and the competence of any labour involved in the application are beyond our control. The company does not assume any liability or consequential damage for unsatisfactory results, arising from the use of our products.